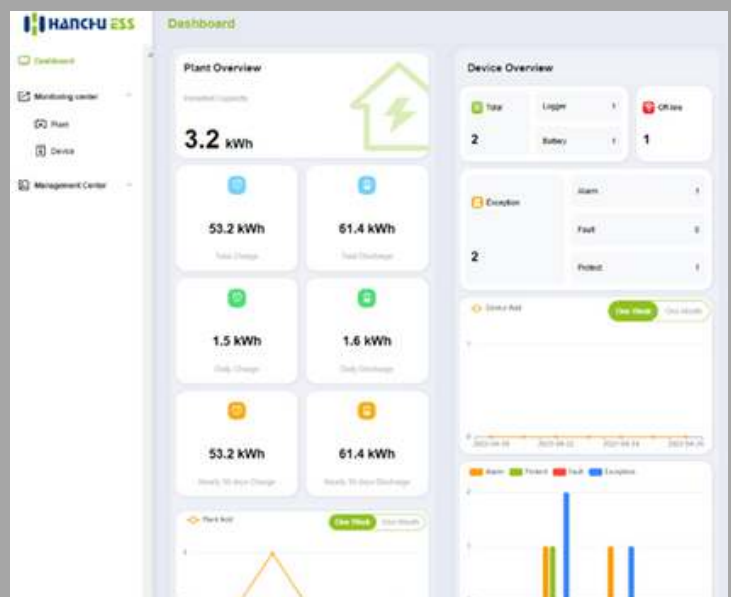


# Greenlinx

## Low Voltage Battery

Greenlinx Harnitek uses HPD lithium to achieve market leading charge and discharge levels. Smaller than other batteries this great looking battery has inbuilt modem to allow single batteries to be monitored online. Long and short cables provided with every unit, just plug and play set up for the most efficient battery we have ever distributed.

- 01 HPD Technology (High Power Density)
- 02 100% Useable Capacity 3.2KW
- 03 Integrated Modem/Online Monitoring
- 04 Low Temperature Protection
- 05 Long and short cables included
- 06 SOC and Status Display
- 07 10 years manufacturer warranty
- 08 40A Charge 60A discharge per unit



<b>Model</b>	<b>LV-L3.2-1P</b>
<b>Nominal Capacity</b>	<b>3.2kWh</b>
<b>Usable Capacity</b>	<b>3.2kWh</b>
<b>Cell Type</b>	<b>LFP(LiFeP04)</b>
<b>Depth of Discharge</b>	<b>100%</b>
<b>Operating Voltage Range</b>	<b>48 to 57.6V</b>
<b>Nominal Voltage</b>	<b>51.2V</b>
<b>Nominal Charging Current</b>	<b>40A</b>
<b>Nominal Discharging Current</b>	<b>60A</b>
<b>Max.Continuous Discharging Current</b>	<b>100A</b>
<b>Weight</b>	<b>34.9Kg</b>
<b>Dimension</b>	<b>484*302*165mm</b>
<b>Operating Temperature</b>	<b>Charge: From 0 to 50c Discharge: From -10 to 50c</b>
<b>Humidity</b>	
<b>Cooling Type</b>	<b>Natural</b>
<b>IP rating of enclosure</b>	<b>IP54</b>
<b>Warranty</b>	<b>10years</b>
<b>Communication Port</b>	<b>CAN/RS485</b>
<b>Capacity (LVES—L Series)</b>	<b>3.2kWh/6.4kWh/9.6kWh/12.8kWh/16kWh/ 19.2kWh/22.4kWh/25.6kWh</b>
<b>Safety</b>	<b>'EC 62619</b>
<b>Transportation</b>	<b>UN38.3</b>